



ПОШТА БЕЛАРУСІ • ПОЧТА БЕЛАРУСИ • BELARUS POST

РЭСПУБЛІКАНСКАЕ  
ЎНІТАРНАЕ ПРАДПРЫЕМСТВА  
ПАШТОВАЙ СУВ'ЯЗІ

БЕЛПОШТА

www.belpost.by/stamps

marka@belpost.by

ВЫДАВЕЦКІ ЦЭНТР «МАРКА» ИЗДАТЕЛЬСКИЙ ЦЕНТР «МАРКА» PUBLISHING CENTRE «MARKA»

ІНФАРМАЦЫЙНЫ ЛІСТ • ИНФОРМАЦИОННЫЙ ЛИСТОК • NEWSLETTER

# 23 (724)

June 26, 2017

## Towns of Belarus. Mogilev

On July 3, 2017 the Ministry of Communications and Informatization of the Republic of Belarus will issue the stamp "Mogilev" of the series "Towns of Belarus".

A series continuation. Beginning Nos.1032 and 1153. **Design:** Yauheniya Biadonik. **Printing:** offset. **Colour:** full colour. **Paper:** chalk-surfaced, gummed. **Perforation:** comb 13. **Size of the stamp:** 52x29,6 mm. **Sheet composition:** 6 (2x3) stamps. **Size of the sheet:** 130x118,5 mm. **Print quantity:** 48.000 stamps.

The stamp was printed at the Republican Unitary Enterprise "Belarusian Printing House Publishing Co.".

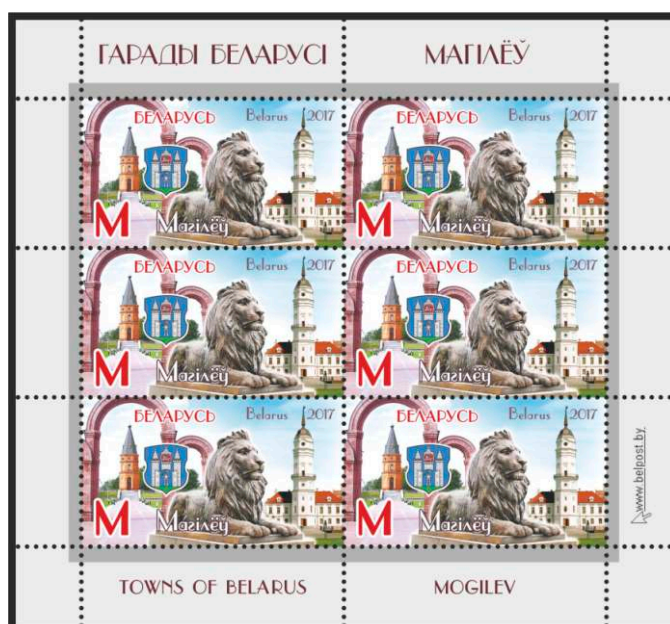
No. 1207



Mogilev



Elements of protection



Face value "M" is equal to the air-mail tariff of a postcard abroad.

Mogilev is one of the most ancient cities of Belarus. It came into being in 1267 when a castle was laid on a high hill at the bend of the Dnieper at the confluence of the river Dubrovenka. During the following centuries a city developed around the castle. It is first mentioned in the 14<sup>th</sup> century in the "List of Russian cities distant and near."

Today Mogilev is a regional centre with developed infrastructure. Many houses and civil buildings of the late 18<sup>th</sup>-19<sup>th</sup> centuries have survived in the city. They preserve the colour of the historical past of the city on the Dnieper.



Colour of the postmark - black.

Special **postmark** and **FDC**  
designed by Ya. Biadonik



A special **cancellation** on FDC will be carried out on the stamp issuing day at the post office No.30 of Mogilev.